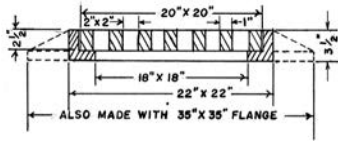


R-3203 Series
Flat Drain Frame, Grate

Heavy Duty

| CATALOG NUMBER | GRATE TYPE | SQ. FT. OPEN | WEIR PERIMETER LINEAL FEET |
|----------------|------------|--------------|----------------------------|
| R-3203-A | H | 1.0 | 6.6 |
| R-3203-B | H | 1.0 | 6.6 |
| R-3203-C | H | 1.0 | 6.6 |

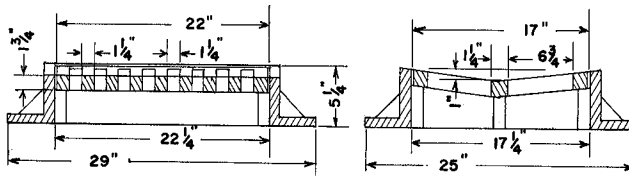


Illustrating R-3203-B with 27" x 27" frame.

| Catalog No. | Description |
|-------------|------------------------------|
| R-3203-A | With 22" x 22" base |
| R-3203-B | With top flange 27" x 27" |
| R-3203-C | With bottom flange 35" x 35" |

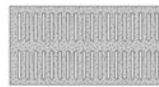
R-3205
Concave Inlet Frame, Grate

Heavy Duty



Standard Grate (shown): Type K
Alternate Grate(s):

| CATALOG NUMBER | GRATE TYPE | SQ. FT. OPEN | WEIR PERIMETER LINEAL FEET |
|----------------|------------|--------------|----------------------------|
| R-3205 | K | 0.9 | 6.5 |
| R-3205 | P | 0.3 | 6.5 |

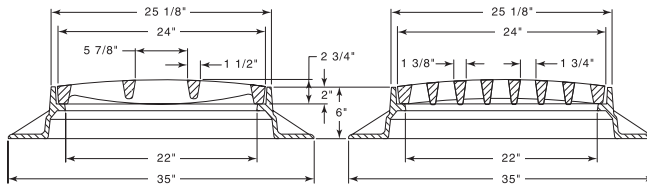


Type P



R-3210-A
Catch Basin Frame, Convex Grate

Heavy Duty

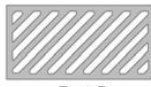


Standard Grate (shown): Type C convex
Alternate Grate(s):

| CATALOG NUMBER | GRATE TYPE | SQ. FT. OPEN | WEIR PERIMETER LINEAL FEET |
|----------------|------------|--------------|----------------------------|
| R-3210-A | C | 1.5 | 8.0 |
| R-3210-A | A | 1.5 | 8.0 |
| R-3210-A | R | 1.6 | 8.0 |



Type A

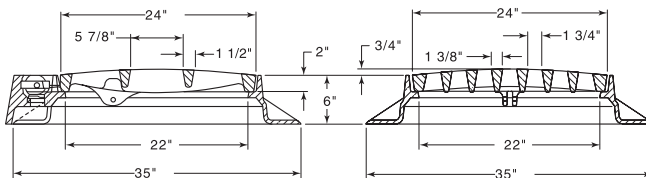


Type R



Available with Type L grate, see R-3210-L.
Available with Type Q grate, see R-3210-Q.

R-3210-ALM
Catch Basin Frame, LiftMate Convex Grate



| CATALOG NUMBER | GRATE TYPE | SQ. FT. OPEN | WEIR PERIMETER LINEAL FEET |
|----------------|------------|--------------|----------------------------|
| R-3210-ALM | C | 1.5 | 8.0 |



COMBINATION
INLETS
3